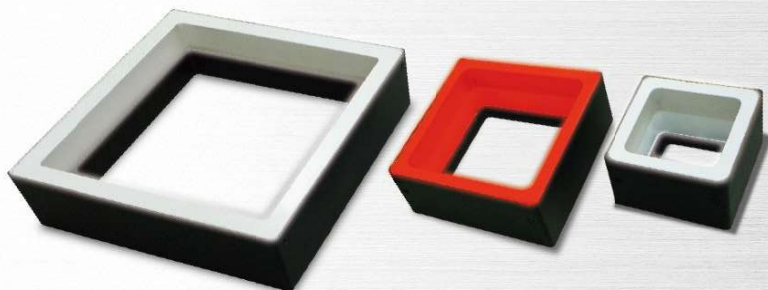


Low Angle Square Lights



Outline

The diffused light emitted by the square low-angle oblique light can be used to solve the problem that the ring light source cannot illuminate the contours of the four corners.

Feature

1. Provide lighting evenly from top.
2. Provide shadowless illumination from the four angles.
3. Ability to evenly diffused inspection and provide shadowless lighting with diffuser
4. Best choice of square inspection objectives.

Major applications

1. IC wafer inspection & substrate part inspection
2. Inspection from the side and to emerge from internal surfaces of object for stain
3. Visual inspection of wafers
4. Solder inspection& connector pitch inspection

Model explanation

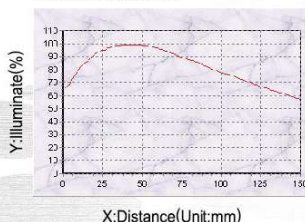


Available Models

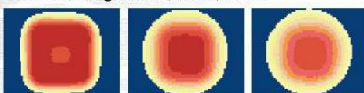
Model	Color	Power Consumption	Weight (g)	Dimension
GL-FPQ4848R-24	●	24V/1.5W		
GL-FPQ4848W/B/G-24	○ ● ●	24V/2.0W	50	1
GL-FPQ4848IR-24	●	24V/1.5W		
GL-FPQ7575R-24	●	24V/2.4W		
GL-FPQ7575W/B/G-24	○ ● ●	24V/3.4W	92	2
GL-FPQ7575IR-24	●	24V/2.4W		
GL-FPQ9696W/B/G-24	○ ● ●	24V/3.3W	103	3
GL-FPQ142142W/B/G-24	○ ● ●	24V/5.3W	154	4
GL-FPQ152152R-24	●	24V/4.8W		
GL-FPQ152152W/B/G-24	○ ● ●	24V/7.2W	258	5
GL-FPQ152152IR-24	●	24V/4.8W		

Luminous intensity distribution characteristics

GL-FPQ152152W Graph



Illuminate Height:5CM,10CM,15CM



Brightness level 0 100

Dimensional Diagrams(mm)

